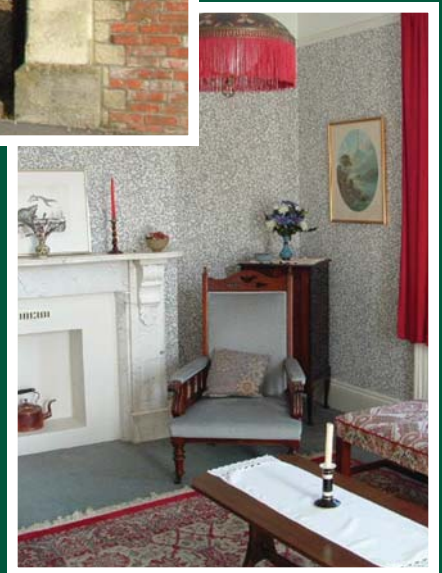


ARLINGTON HOUSE



Two week stay at Arlington House in England's West Country

Arlington House is a Victorian house in Marnhull, a large village in Dorset, the fictional birthplace of Thomas Hardy's 'Tess of the d'Urbervilles'.



Modernized in the 1970s, the house retains many of its historical features from 1890. With 5.5 bedrooms, 2.5 baths, a generous new kitchen, dining room, 2 living rooms and assorted sheds in an overgrown garden, it comfortably houses a family of 6-7. Tourists attractions for all ages within 1 hour's drive: Bath, Stonehenge, Stourhead Gardens, Salisbury Cathedral, Corfe Castle, Longleat Safari Park, Caves at Wookey Hole, Giant of Cerne Abbas, etc. A caretaker lives across the street. He will make up beds beforehand, clean afterwards, and is available for any questions and problems.